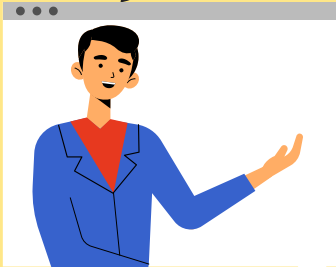


A vibrant, cartoon-style illustration of a child's room. The room features a wooden desk with a pink top and orange legs, a blue chair with a white cushion, a wooden bookshelf with books and a pink ball, a window with a view of greenery, and various toys including a teddy bear, a blue monkey, and a red box. A string of yellow and blue pennants hangs from the ceiling. The background is a light blue wall with a white ceiling. The floor is brown wood. The overall scene is bright and cheerful.

Welcome!

LV1 U7 L4

What did you
do today?



I went to ____.
I played ____.



How do you
feel today?



I feel ____.
(happy, excited, sad, upset)



Pets!



In this lesson:



Pet Show!



What do you see? I see a (puppy)!

This dog is friendly. That dog is unfriendly.



Story Time!



Pet Show!





I see
a dog!

Try to have the student read by themselves. Have them circle the dog.





He is friendly!

Ask the student if the dog is a boy or girl.



Try to have the student read by themselves. Have them circle the puppy.



They are
both friendly!

Try to have the
student read by
themselves.





I see
a cat!

Try to have the student read by themselves. Have them circle the cat.





She is friendly!

Ask the student if the cat is a boy or girl.



**I see a
kitten!**

Try to have the student read by themselves. Have them circle the kitten.





They are
both friendly!

Try to have the
student read by
themselves.



**I see
a bird!**

Try to have the student read by themselves. Have them circle the bird.



She is friendly!

Ask the student if the fish is a boy or girl.





**I see a
chick!**

Try to have the student read by themselves. Have them circle the chick.





They are
both friendly!

Try to have the
student read by
themselves.



Try to have the student read by themselves. Have them circle the fish.





He is unfriendly!

Ask the student if the fish is a boy or girl.



I see a
turtle!

Try to have the student read by themselves. Have them circle the turtle.





She is friendly!

Ask the student if the turtle is a boy or girl.



I see a
snake!

Try to have the student read by themselves. Have them circle the turtle.





She is unfriendly!

hiss!

Ask the student if the snake is a boy or girl.



Try to have the student read by themselves. Have them circle the hamster.





He is friendly!

Ask the student if the hamster is a boy or girl.



**The
End**



I see
a dog!

Have the student
read the passage
and draw the
corresponding
animal in the book.





Have the student read the passage and draw the corresponding animal in the book.



**I see
a cat!**

Have the student
read the passage
and draw the
corresponding
animal in the book.





**I see a
kitten!**

Have the student read the passage and draw the corresponding animal in the book.





I see
a bird!

Have the student
read the passage
and draw the
corresponding
animal in the book.





**I see a
chick!**

Have the student
read the passage
and draw the
corresponding
animal in the book.





I see
a fish!

Have the student read the passage and draw the corresponding animal in the book.





Have the student read the passage and draw the corresponding animal in the book.





I see a
snake!

Have the student
read the passage
and draw the
corresponding
animal in the book.





Have the student read the passage and draw the corresponding animal in the book.





**The
End**

Review:



Pet Show!



What do you see? I see a (puppy)!

This dog is friendly. That dog is unfriendly.



Great job!



Today you learned:



Pet Show!



What do you see? I see a (puppy)!

This dog is friendly. That dog is unfriendly.





Homework!

- Read the story with a parent or friend. Send an audio recording or video of you reading the story to your teacher.

